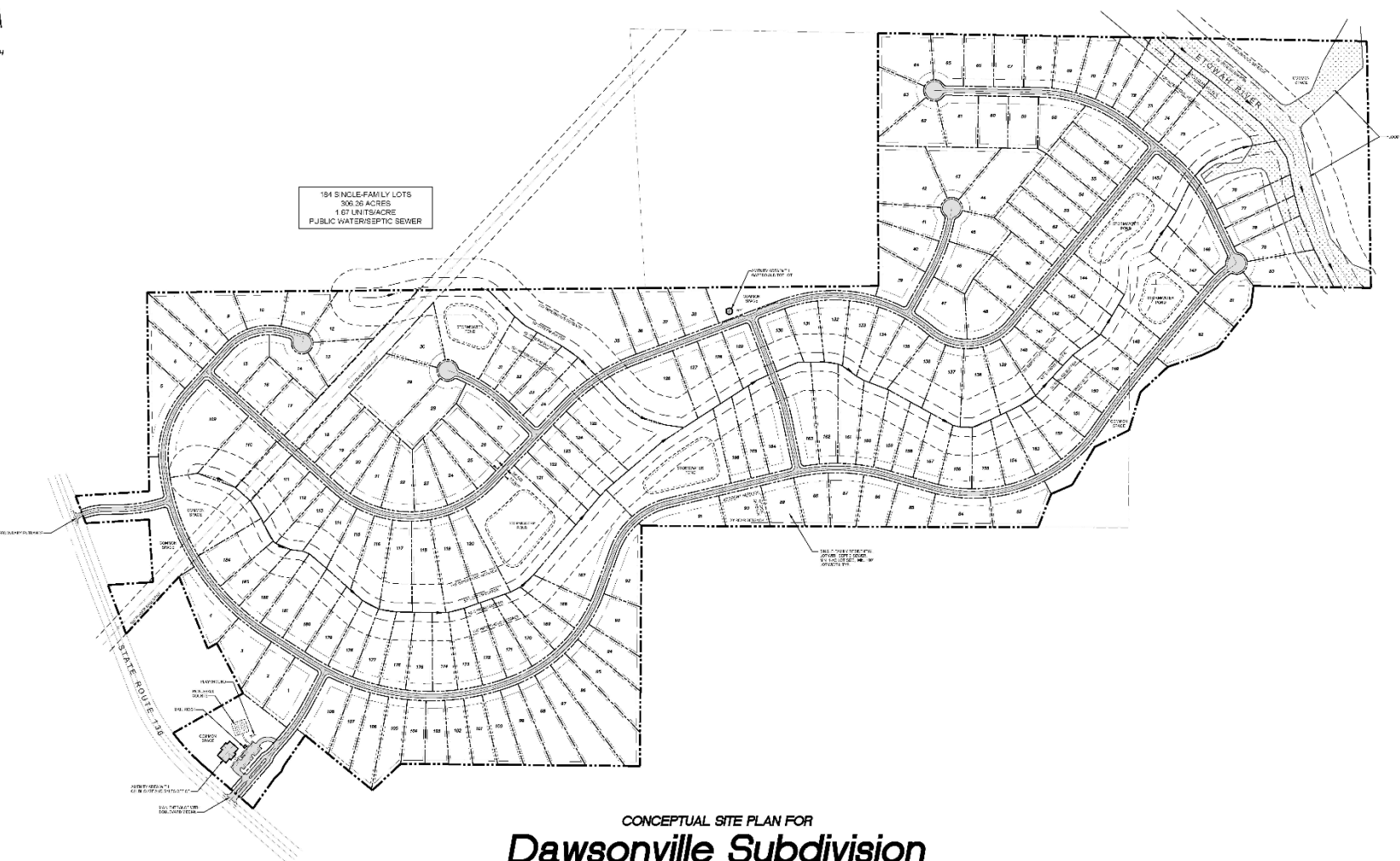




194 SINGLE-FAMILY LOTS
300.26 ACRES
1.07 LINTS/ACRE
PUBLIC WATER/SEPTIC SEWER



CONCEPTUAL SITE PLAN FOR
Dawsonville Subdivision
FOR NATVELEE, LLC AND WATSON FAMILY PROPERTIES, LLC
DAWSON COUNTY, GEORGIA
CONCEPT 1
4/13/25



DOVETAIL
civil design inc
3651 Mary Hill Road
Suite 1500
Watkinsville, GA 30677
Office: (678) 126-3300
www.dovetailcvi.com

CONCEPTUAL SITE PLAN FOR NATVELEE, LLC AND WATSON FAMILY PROPERTIES, LLC. ALL RIGHTS RESERVED.